

KEMERTON INDUSTRIAL PARK

REVIEW OF APPROVALS & INVESTIGATIONS

1. **1985** - Conceptual Land Management Plan Kemerton Area (Forests Department of WA);
2. **1985** - Socio Economic and Social Impact Assessment of the proposed Kemerton Aluminium Smelter (Dames and Moore);
3. **1985** - Land Use Plan for the Leschenault Coastal Park and Kemerton Community Park (State Government);
4. **1986** - Bunbury Region Plan (State Planning Commission);
5. **1987** - Shire of Harvey Town Planning Scheme No.10 (Shire of Harvey);
6. **1988** - Kemerton Industrial Parklands - Technical Report (Fielman Planning Consultants);
7. **1991** - Kemerton Industrial Park Water Source Investigation;
8. **1991** - Kemerton Buffer Study (Dame & Moore);
9. **1991** - Kemerton Buffer/Core Study (Dame and Moore);
10. **1992** - KIP Integrated Environmental Monitoring Program (HGM);
11. **1992** - Wastewater Management and Disposal Study for the KIP (Sinclair Knight);
12. **1992** - KIP Landscape Study (CALM);
13. **1992** - Kemerton Water Supply Stage 1 Engineering and Preliminary Cost Estimates (BHP Engineering);
14. **1992** - Integrated Environmental Monitoring Program (Halpern Glick Maunsell);
15. **1992** - Social Impact Monitoring Process KIP (Kemerton Community Committee KCC);
16. **1993** - Kemerton Handbook (Paul Holmes);
17. **1994** - Review of Hydrogeology of the Core and Service Industry Areas at Kemerton (AGC Woodward Clyde);
18. **1994** - KIP - Monitoring Well Installation and Baseline Monitoring (AGC Woodward Clyde);
19. **1994** - KIP - Groundwater Monitoring Annual Review (AGC Woodward Clyde);
20. **1994** - Water Supply for KIP Reports and Recommendations of EPA Bulletin 758 (EPA);
21. **1995** - KIP Structure Plan and Engineering Study Vol 1 & 2 (BSD);
22. **1995** - Kemerton Heavy Mineral Deposit Notice of Intent to Mine (Cable Sands WA);
23. **1996** - Shire of Harvey District Planning Scheme No.1 (Shire of Harvey);
24. **1997** - KIP Expansion Study (AGC Woodward Clyde);
25. **1998** - Industry Water Supply and Wastewater Disposal - (DRD);
26. **1998** - Suitability for Animal Processing Industries (AGC Woodward Clyde);
27. **1998** - EPA Advice Industry 2030 (EPA);
28. **1998** - KIP Expansion Noise Assessment (Herring Storer);
29. **1999** - Flora and Fauna Survey - Original Core (Armstrong/Muir);
30. **1999** - Flora and Fauna Survey - Expanded Core (Armstrong/Muir);
31. **1999** - Flora and Fauna Survey - Support Area, (Armstrong/Muir);
32. **1999** - Peer Review of Biological Survey (Bennett and Welker);
33. **1999** - Kemerton Water Study Phase 1 (Bowman, Bishaw, Gorham and Rockwater);
34. **1999** - Expansion Study - Noise Modelling (BSD);
35. **2000** - Industry 2030 Final (State Government);
36. **2000** - Visual Impact Assessment (BSD);
37. **2000** - Values of the Kemerton Bushland (Unpublished EPA)

38. **2001** - Kemerton - Bunbury Rail Corridor (BSD);
39. **2002** - Water Study Phase 2 (Aquaterra);
40. **2002** - Strategic Planning for Future Power Generation. Bulletin 1067 (EPA);
41. **2002** - Kemerton Power Station Strategic Environmental Review (Sinclair Knight Mertz);
42. **2003** - EPA Bulletin 1108 Greater Bunbury Region Scheme (EPA);
43. **2004** - Kemerton Rail Spur Economic Evaluation (SKM);
44. **2004** - Kemerton Significant Flora and Wetlands. (Bennett Environmental Consulting)
45. **2005** - DoW Groundwater Extraction Guidelines (DoW);
46. **2006** - Long Term monitoring Survey Gibson Plots (Quilty Environmental);
47. **2006** - Kemerton Structure Plan - Landscape Assessment (William James Landscape Architect);
48. **2007** - Environmental Overview (Coffey Environment);
49. **2007** - Greater Bunbury Region Scheme (Department of Planning);
50. **2009** - KIP Strategy Plan (Thompson McRobert Edgeloe);
51. **2009** - Kemerton Water Management (DoW);
52. **2009** - Detailed Flora Survey (Cardno);
53. **2009** - Detailed Fauna Survey (Cardno);
54. **2010** - Air Quality Modelling (Air Assessments);
55. **2010** - Qualitative Risk Modelling (Environmental Risk Solutions);
56. **2010** - Noise Modelling (Herring Storer);
57. **2010** - Traffic Modelling (Transcore);
58. **2010** - Desktop Geotechnical Assessment (Douglas Partners);
59. **2010** - Literature Review (Quilty Consultants);
60. **2010** - Targeted Orchid Survey of Lot 510 Marriott Road (Mattiske Consulting)
61. **2011** - Mining Tenement Notes (Landform);
62. **2011** - Groundwater Monitoring Jan 2011 - August 2012 (Parsons Brinckerhoff);
63. **2011** - Structure Planning Servicing and Engineering Report (Wood and Grieve);
64. **2011** - Local Water Management Strategy (RPS);
65. **2011** - Environmental Management Plan (Parsons Brinckerhoff);
66. **2011** - Aboriginal Heritage Management Plan (Brad Goode and Associates);
67. **2011** - Strategic Demand Analysis (Syme Marmion and Co);
68. **2011** - Detailed Orchid Survey (AECOM);
69. **2011** - Black Cockatoo and Western Ringtail Possum Habitat Assessment (Bamford and Associates);
70. **2011** - Wellington Collie Supply and Demand Stage 1 (MJA);
71. **2011** - EPBC Significance Test (Mattiske Consulting);
72. **2012** - Structure Plan Rail Assessment (GHD); and
73. **2012** - Structure Plan (The Planning Group).

KEY MILESTONES AND APPROVALS

Early 1980's a range of sites sought for aluminium smelter. This included Kemerton, Worsley Siding and Pinjarra (dropped). Investigations led to the Environmental Review and Management Plan and both sites identified as suitable. 1984 State Government agreed to acquire land at Kemerton to act as buffer for aluminium smelter, thereby making this the preferred site;



Smelter did not proceed at Kemerton for various reasons, including high water table, however several initiatives progressed confirming appropriateness of Kemerton as an area for Industry proceeded:

1985 - Land Use Plan for the Leschenault Coastal Park and Kemerton Community Park (State Government), proposing to integrate smelter with forestry, recreation and conservation activities;

1986 - Bunbury Region Plan (State Planning Commission) incorporated policies providing for the aluminium smelter and consequent buffer requirements;

1987 - Shire of Harvey Town Planning Scheme No.10 (Shire of Harvey) designated 3700ha area acquired by the State as an "Additional Use" area, wherein a site not exceeding 400ha could be used for the development of an aluminium smelter.



Late 1980's a number of industries had established at Kemerton;
Silicon Smelter (Simcoa)
Titanium Dioxide Plant (Crystal Global)
Chlor Alkali Plant (Coogee Chemicals)
Lime Plant
Air Separation Plant (BOC Gases)



1989 Kemerton Advisory Board established.



1991 identified by State Government to expand Core, following air, noise and risk modelling.



1994 further detailed assessment expanded Core to 1,543 ha.



1996 Shire of Harvey Planning Scheme No. 1 adopted reflecting expanded Industrial Core (1,543 ha)



1997 LandCorp and DRD agreed to investigate expanding Core to include additional 943 ha.



1998 EPA Assessment of expanded Core under Industry 2030.



2000 Industry 2030 adopted by Cabinet expanding Kemerton at Regional Level., recognising an expanded Core.



2003 EPA Bulletin 1108 approved the GB Region Scheme Amendment subject to meeting deferred environmental factors, through the preparation of an Environmental Management Plan.



2007 GBRS Gazetted. Region scheme to prevail if inconsistencies between Local and Region Scheme zoning. Shire zoning subject to the preparation of structure plan.



2008 KIP Strategy Plan released , however was not formally adopted by authorities despite intention to be Structure Plan. Lacked Environmental Management Plan and LG framework to be amended to incorporate structure plan into Scheme. Included reducing Core to protect wetlands



2009 (April) WAPC approval to create 9 lots on Marriott Road 5ha to 20ha in area (33 subdivision conditions)

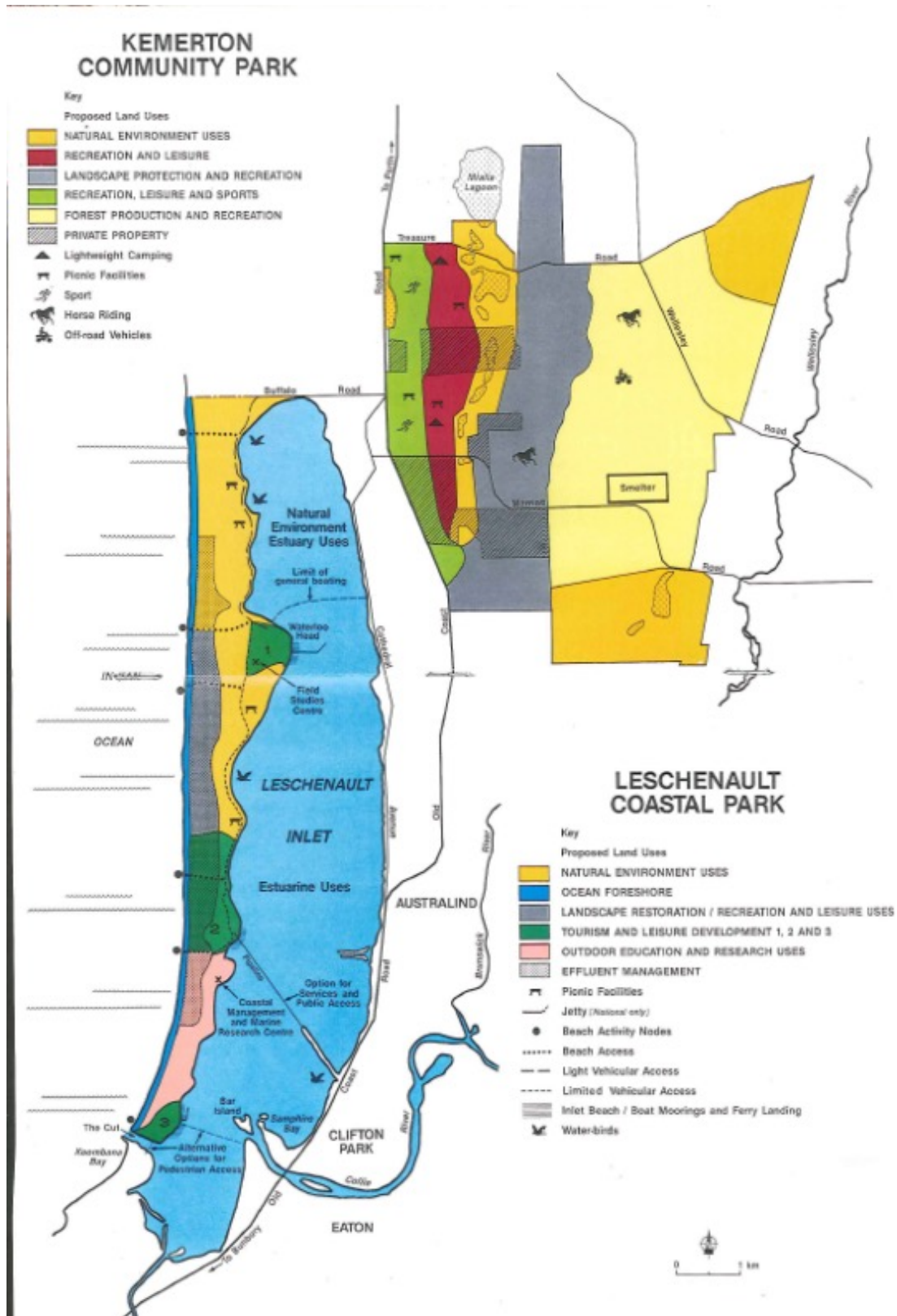


2009 (May) WAPC approval to create single 31ha Lot on Treasure Road (8 conditions)

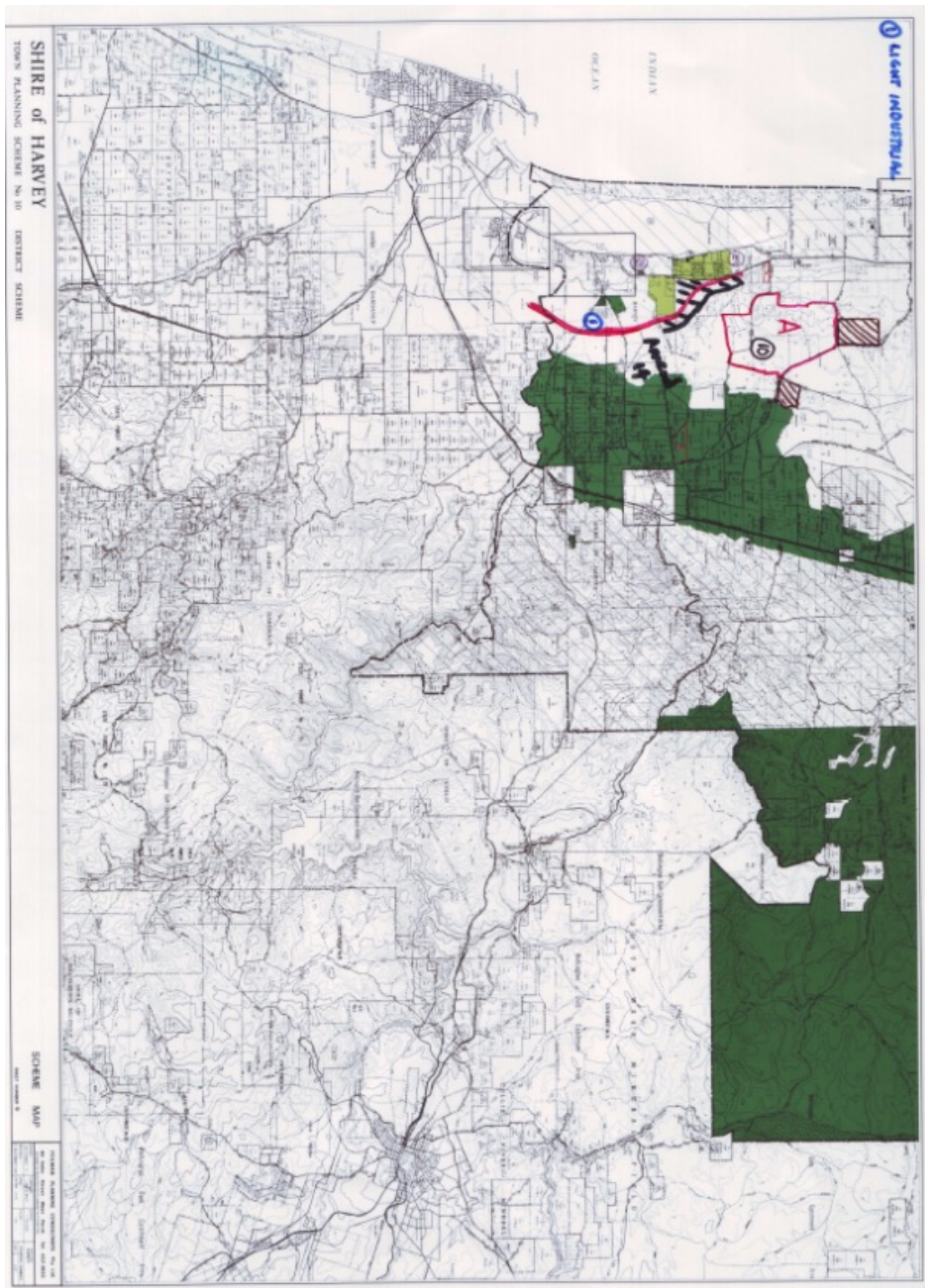


2011 Scheme Amendment 93 adopted to include provisions into scheme to enable the assessment and implementation of structure planning .

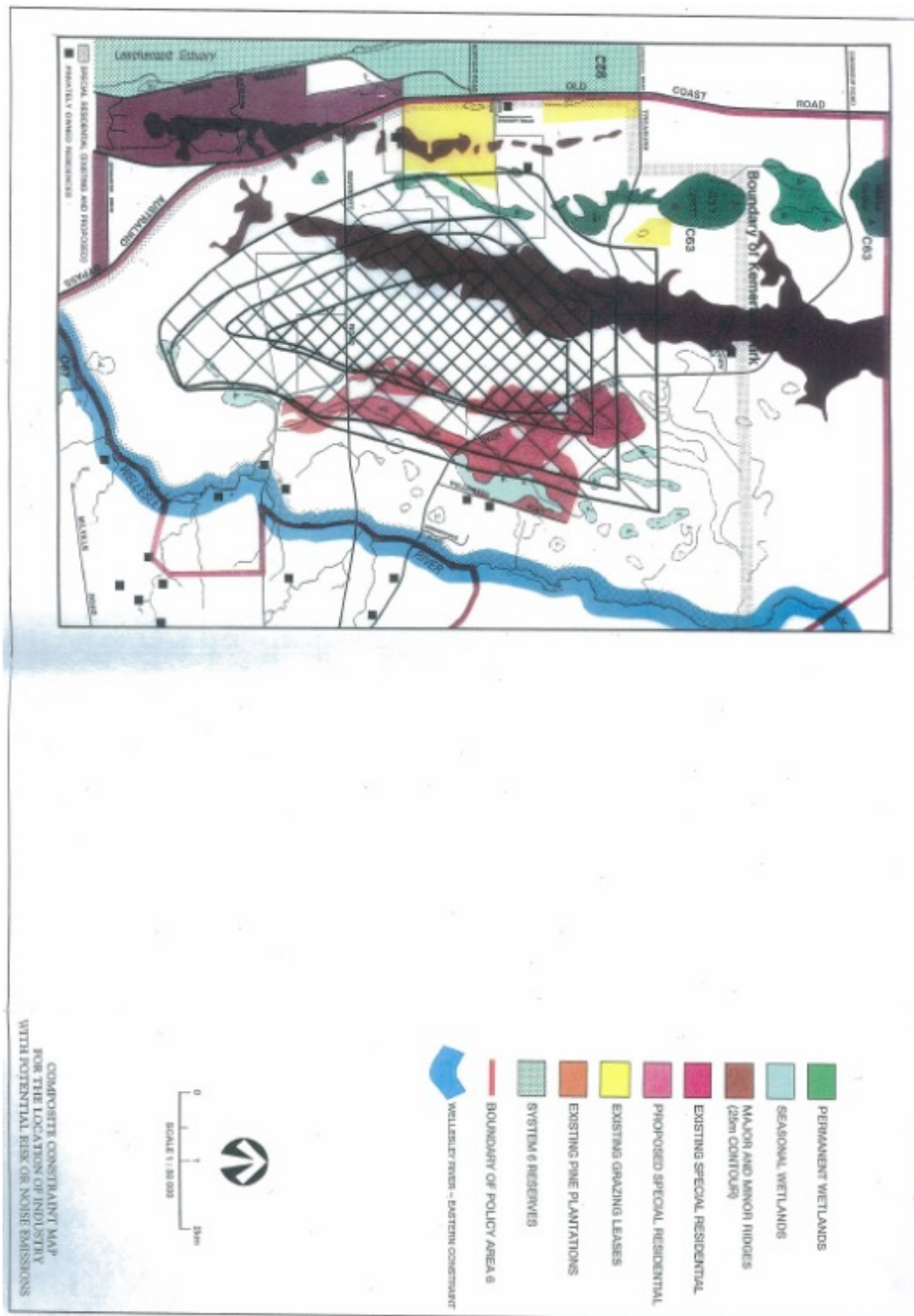
Evolution of Structure Plan



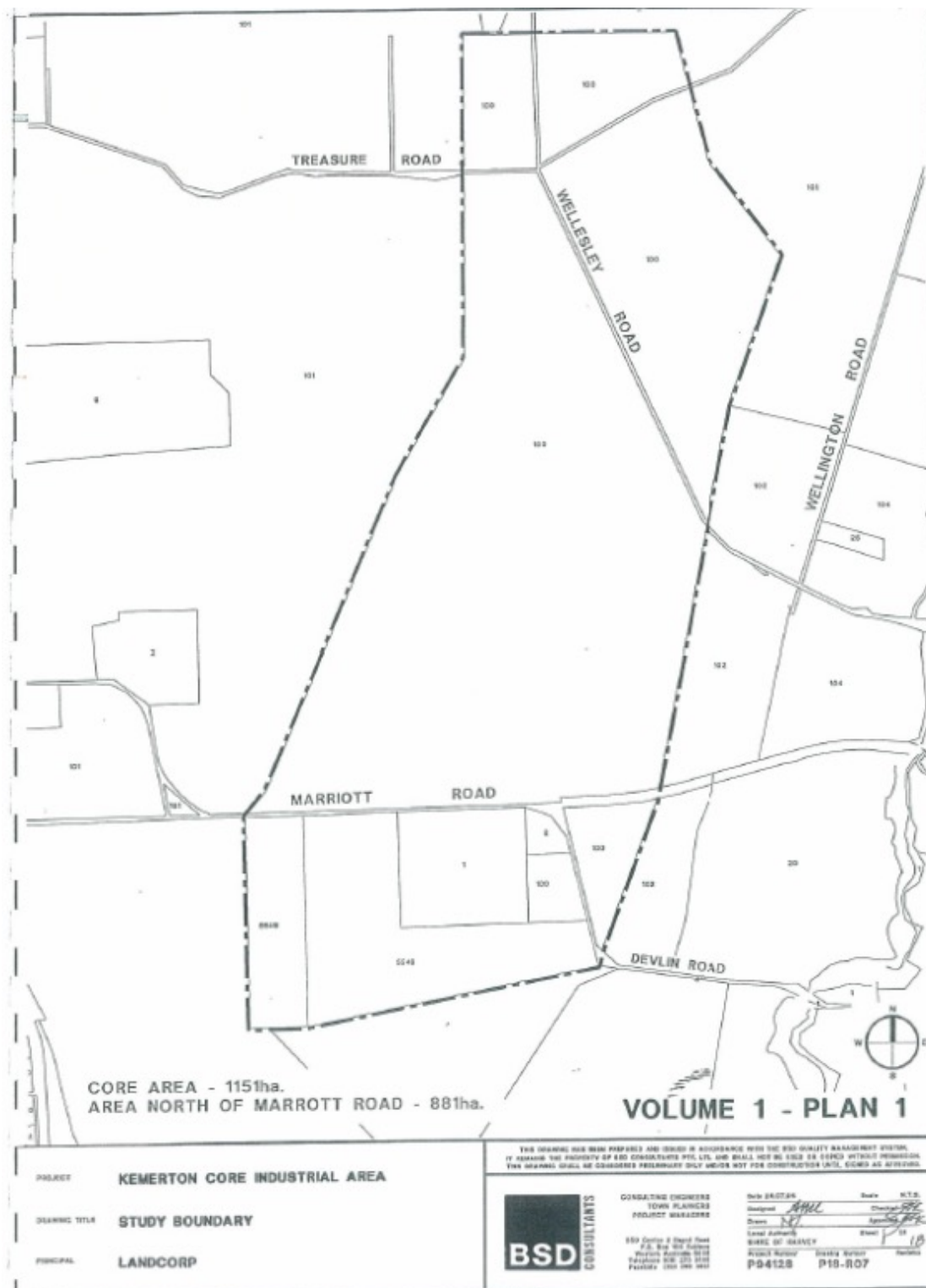
Source: **1985** - Land Use Plan for the Leschenault Coastal Park and Kemerton Community Park (State Government);



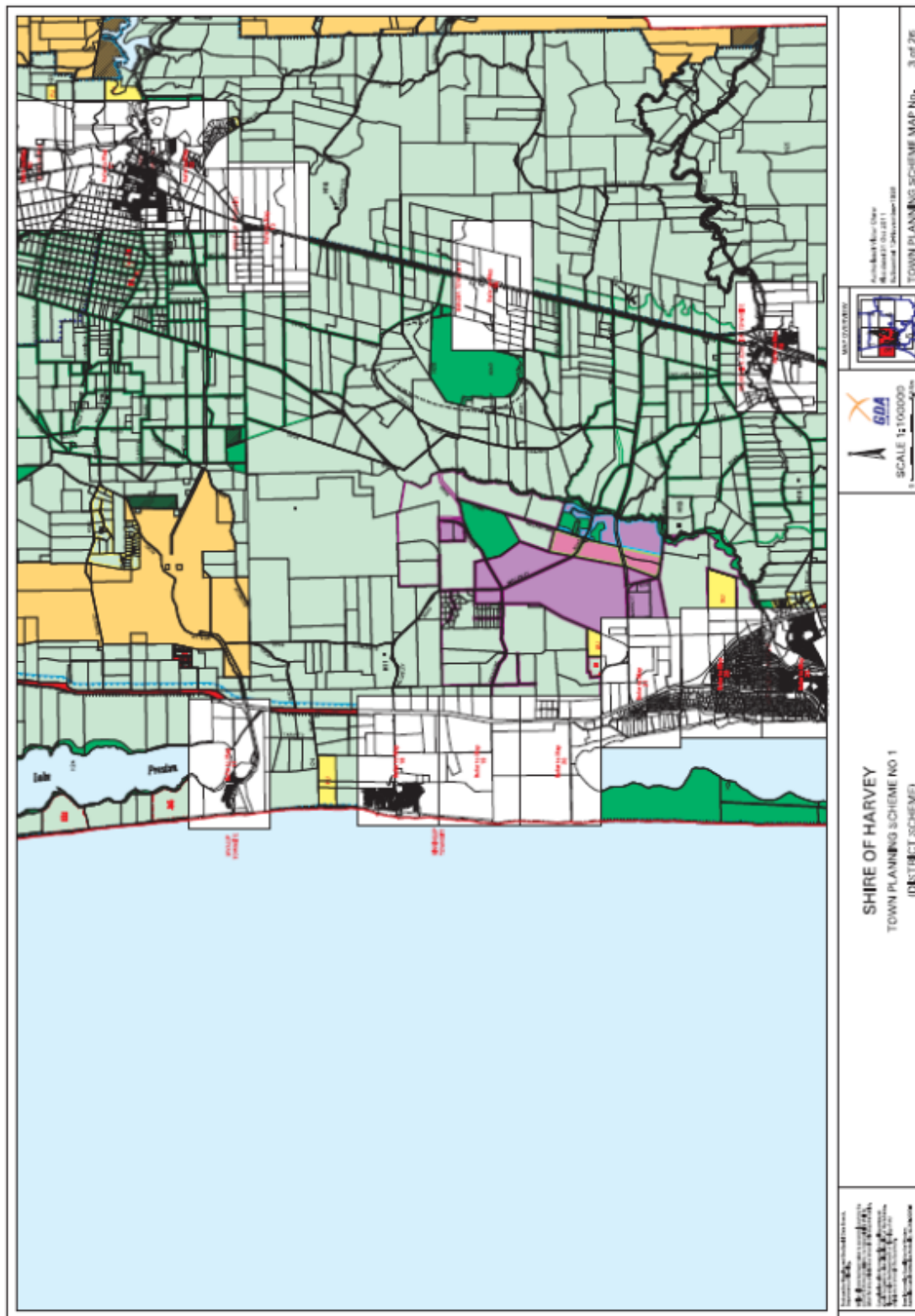
Source: **1987** Shire of Harvey Planning Scheme No 10 (Special Control Area)



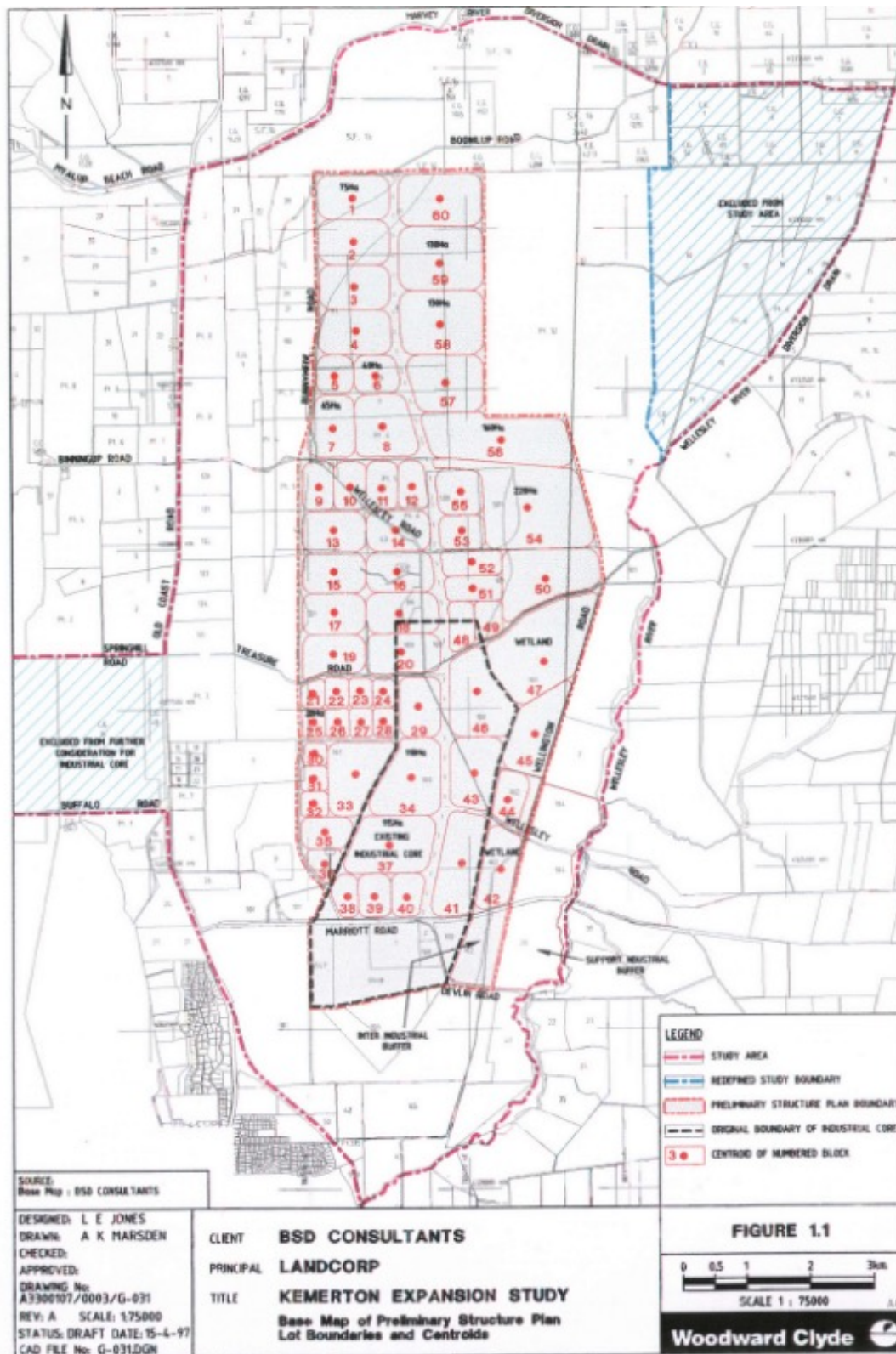
Source 1991 - Kemerton Buffer/Core Study (Dame and Moore);



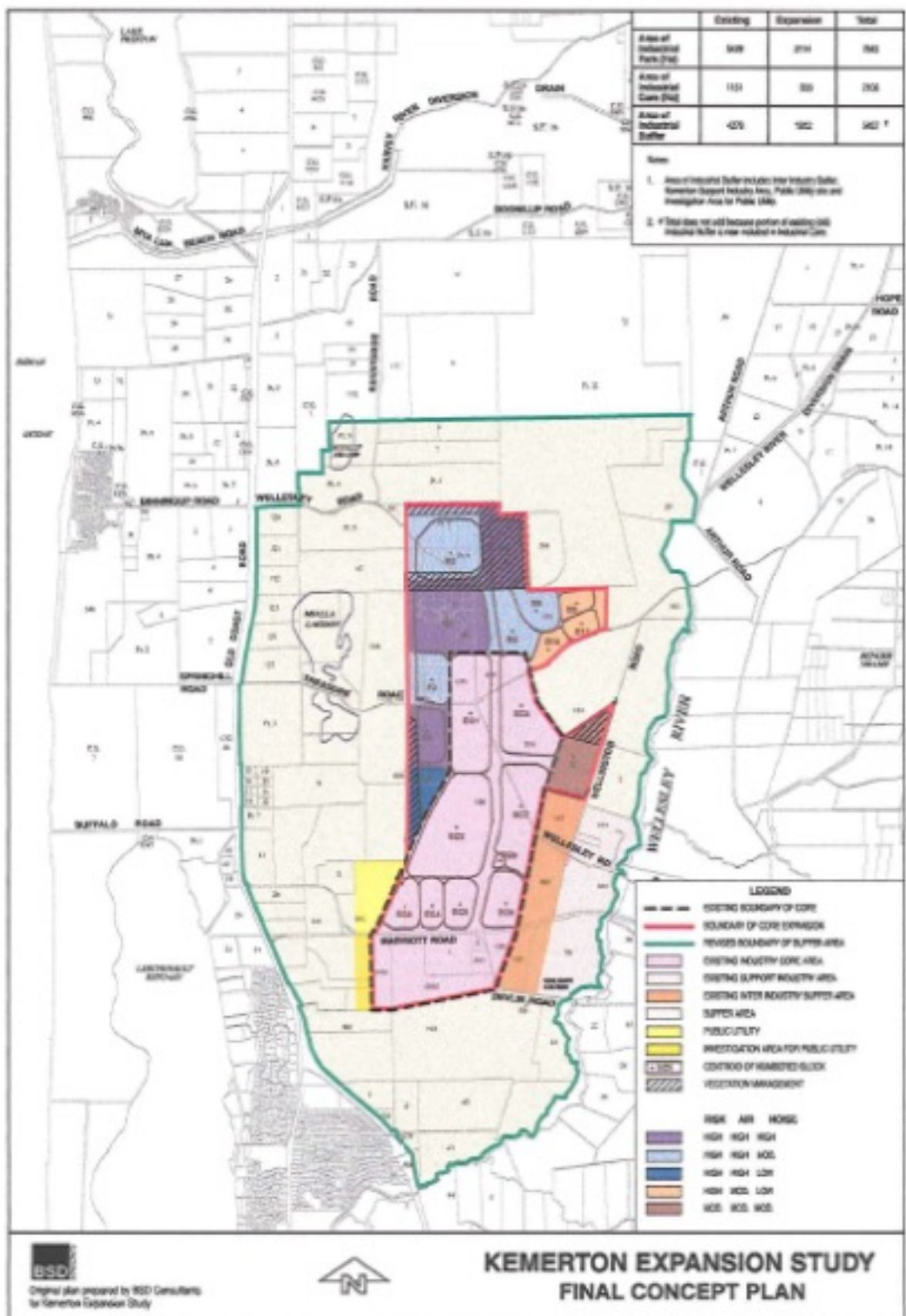
Source: **1995** - KIP Structure Plan and Engineering Study Vol 1 & 2 (BSD);



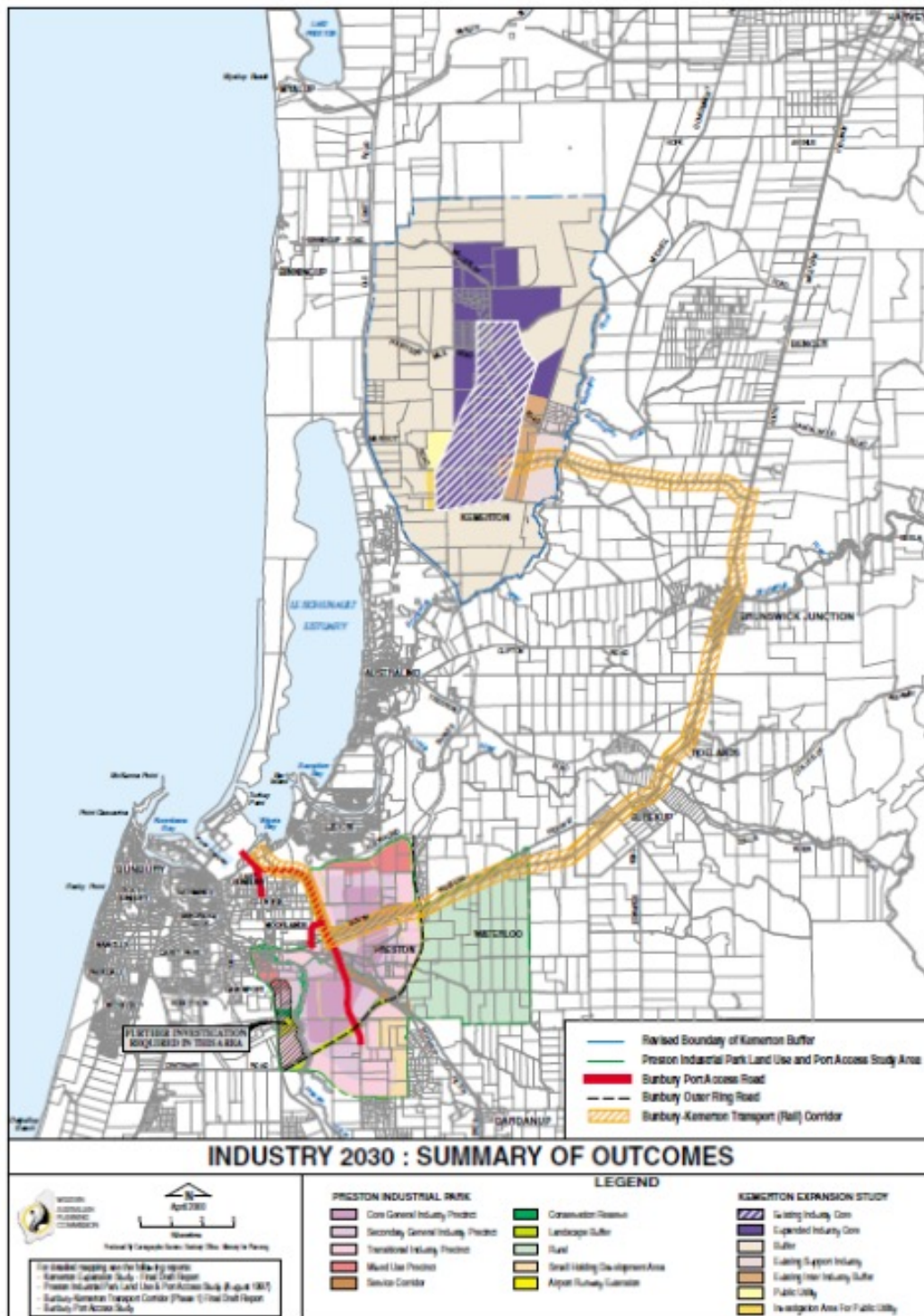
Source: **1996** Shire of Harvey District Planning Scheme No.1 (Shire of Harvey);



Source: 1997 - KIP Expansion Study (AGC Woodward Clyde);



Source: **1999** - Expansion Study - Noise Modelling (BSD);



Source: **2000** - Industry 2030 Final (State Government);

Greater Bunbury Region Scheme

Scale 1:275,000
5 4 3 2 1 0 5
Kilometres

Legend:

Planning Zones

- regional open space
- urban
- urban industrial
- regional rural
- rural
- protection

Infrastructure

- roads
- railways
- water bodies
- ports
- airports
- other regional roads

Other

- urban
- urban industrial
- regional rural
- rural
- protection

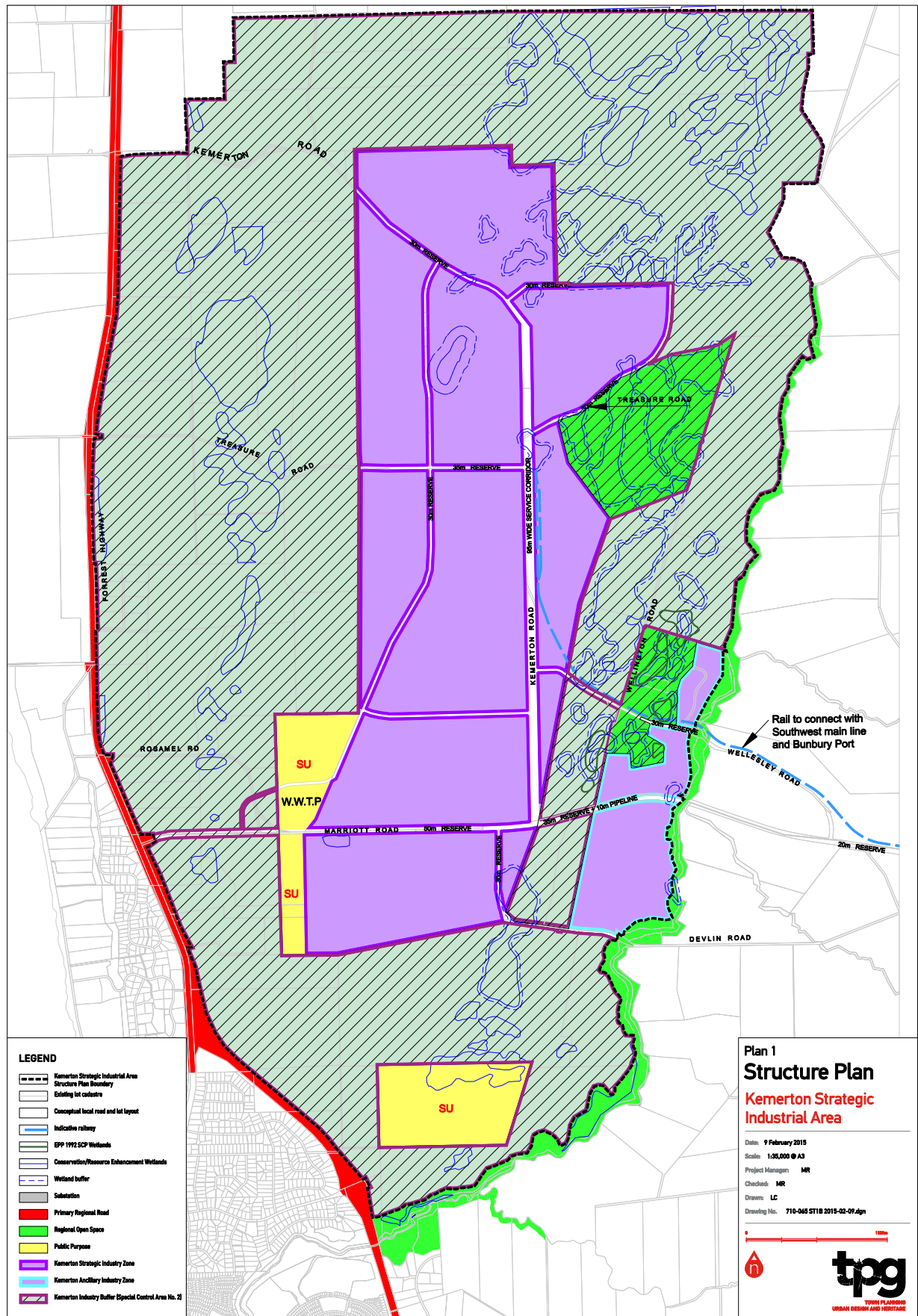
Special Consideration

- urban
- urban industrial
- regional rural
- rural
- protection

Notes:

- SCA 101: urban
- SCA 102: urban industrial
- SCA 103: regional rural
- SCA 104: rural
- SCA 105: protection

Source: **2007-** Greater Bunbury Region Scheme (Department of Planning);



Source: 2015 - Structure Plan (TPG Town Planning Urban Design & Heritage).