

# Local Biodiversity Strategy

2025-2035







## INTRODUCTION

The Shire of Harvey forms part of the Southwest Australia Biodiversity Hotspot and, as such, has a splendid array of diverse natural assets that extend from the forests of the Darling Plateau to the sandy beaches, wetlands and estuaries of the Swan Coastal Plain.

There are 36 Biodiverse Hotspots worldwide that represent just 2.5 per cent of Earth's land surface but support more than half of the world's plant species and nearly 43 per cent of bird, mammal, reptile, and amphibian species as endemics. Protecting the natural environment and its Biodiversity whilst maintaining community culture and lifestyle is a key and critical planning challenge, today and into the future.

In the Shire, the challenge includes the fragmentation, loss and degradation of habitat, and the spread of invasive species in a fast-growing region facing rapid development and urban sprawl.

The Shire is committed to the protection of Biodiversity. This Local Biodiversity Strategy sets out a future approach to the protection, retention and management of the natural environment, the conservation of Biodiversity, and local community engagement.

**This project is supported by funding from the Western Australian Government's State NRM.**





## SUMMARY

Local Natural Areas (LNAs) are defined as the natural areas, containing native species and ecological communities, that exist outside lands managed by State Government.

The Local Biodiversity Strategy determines and prioritises the Shire's LNAs for protection, retention or enhancement.

Strategy's Vision for the community:

*"A community where natural areas are valued, protected, retained and enhanced, supporting a rich Biodiversity that enhances the quality of life, work and play for all."*

Strategy's Vision for the Shire of Harvey:

*"A landscape where Biodiversity is prioritised in all decisions, ensuring the long-term ecological integrity of the Shire that enhances the quality of life, work and play for all."*





## STRATEGY'S GOALS AND OBJECTIVES



### PROTECT

1. Protect areas within an ecological linkage ensuring that ecological linkages remain intact.
2. Protect vegetation complexes with less than 15 per cent remaining in the Shire.
3. Increase the number of areas under formal protection by the Shire.



### RETAIN

1. Retain vegetation complexes with less than 40 % remaining in the Shire.
2. Retain vegetation in good or better condition where possible.
3. Retain vegetation corridors in new development areas.
4. Increase biodiversity through revegetation strategies and weed control.
5. Reduce the number of unauthorised clearing activities.





## STRATEGY'S GOALS AND OBJECTIVES



### ENHANCE

1. Increase the native vegetation coverage throughout the Shire through planting of appropriate native and area-specific species within degraded and completely degraded areas.
2. Increase the number of local ecological linkages within the Shire.
3. Develop long term management and revegetation plans that consider the maintenance and upkeep of rehabilitated areas until they are self-sustaining.



### EDUCATE AND COLLABORATE

1. Increase engagement and collaboration on local biodiversity values.
2. Use technology to increase environmental awareness and education initiatives.
3. Create opportunities for cultural education surrounding the local natural environment.
4. Increasing awareness of the services that the Shire can provide to the local community surrounding environmental values.



# ACTION PLAN

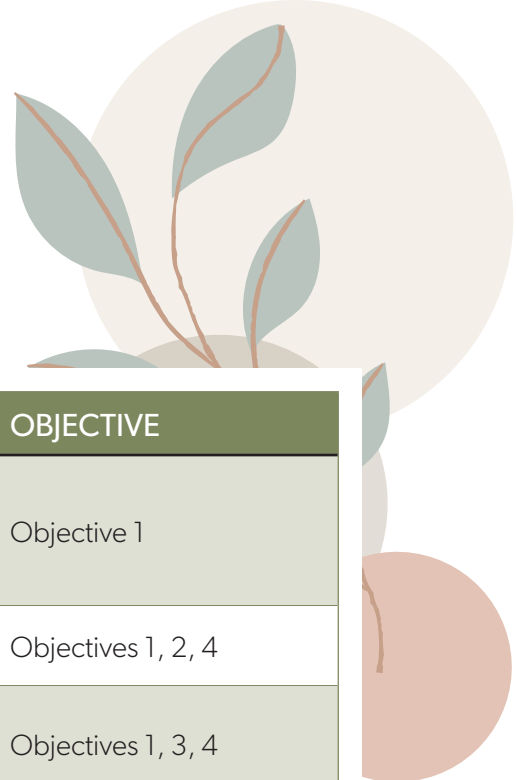
## Local Biodiversity Strategy Actions

ACTION		GOAL	OBJECTIVE
1.	Ensure other relevant Shire strategies and plans reference this Strategy.	Protect Retain Enhance	All objectives All objectives All objectives
2.	Ensure the reservation of land in the Local Planning Scheme identified as an LNA is reflective of biodiversity and conservation significance.	Protect	All objectives
3.	Review the reserve purpose of Shire owned and managed land identified as a LNA and request a change of reserve purpose if required.	Protect	All objectives
4.	Ensure the local planning framework contains sufficient provisions relating to the protection, retention and enhancement of the Shire's biodiversity assets.	Protect Retain	Objectives 1, 2 Objectives 1, 2, 3, 5
5.	Investigate potential for buffers around identified LNAs for incorporation into the local planning framework.	Protect Retain	Objectives 1, 2 Objectives 1, 2, 3
6.	Investigate developing a Significant Tree Register under the local planning framework.	Protect	Objective 1
7.	Investigate opportunities to provide concessional rates when landowners formalise the protection of biodiversity assets and implement formal management regimes.	Protect Retain Enhance	Objectives 1, 2 Objectives 1, 2, 3, 4 Objectives 1, 2
8.	Develop guidelines to assist landowners with revegetation activities.	Retain Enhance	Objective 4 Objective 1
9.	Continue to proactively monitor compliance with approval conditions relating to environmental outcomes and investigate breaches of the <i>Planning and Development Act 2005</i> relating to biodiversity.	Retain	Objective 5
10.	Ensure Shire owned and managed land identified as a LNA have appropriate management plans in place.	Enhance	Objective 3
11.	Promote the use of local native plant species throughout the Shire.	Enhance	Objective 1

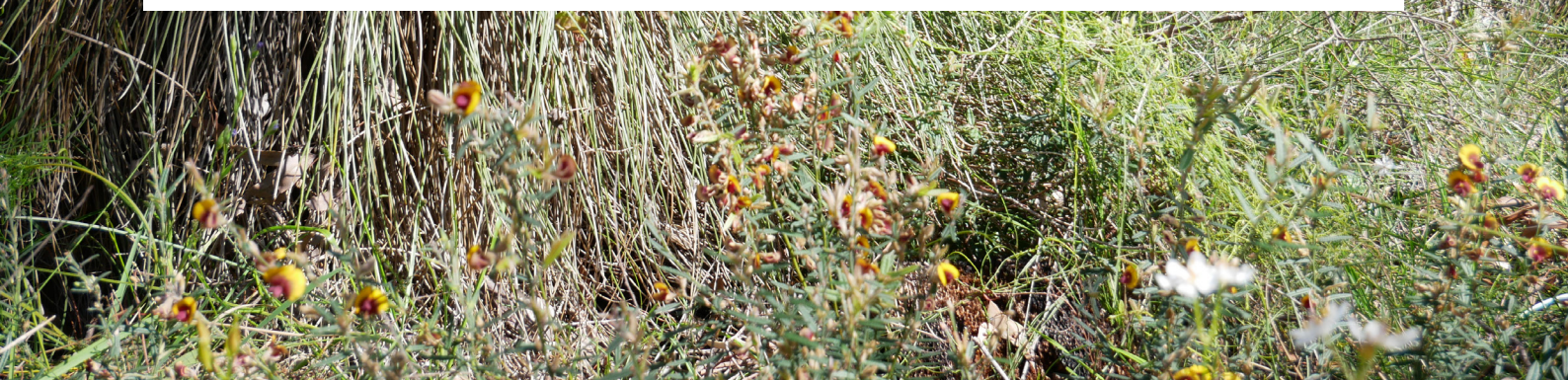


# ACTION PLAN

## Local Biodiversity Strategy Actions



ACTION		GOAL	OBJECTIVE
12.	Continue to provide support for community groups with a focus on environmental sustainability and/or undertaking biodiversity programming.	Educate and Collaborate	Objective 1
13.	Develop educational material to highlight the importance of natural areas.	Educate and Collaborate	Objectives 1, 2, 4
14.	Empower Citizen Science programs and 'Friends of' groups to assist and guide the Shire on future information.	Educate and Collaborate	Objectives 1, 3, 4
15.	Provide capacity building opportunities through events and workshops to support the community in all aspects of biodiversity protection and enhancement.	Educate and Collaborate	Objectives 1, 3, 4
16.	Increase awareness and education across the community, both in formal education systems and in the wider community, to promote biodiversity.	Educate and Collaborate	All objectives
17.	Investigate enabling additional community participation and engagement in Reserves.	Educate and Collaborate	Objective 1
18.	Facilitate and promote Threatened and Priority Flora and Fauna reporting by the community to the Department of Biodiversity, Conservation and Attractions.	Educate and Collaborate	Objective 1
19.	Investigate the establishment of collaborative working relationships with other State Government agencies and adjoining Local Government Authorities and private entities.	Educate and Collaborate	Objective 1
20.	Improve Shire employee education and knowledge on the natural environment.	Educate and Collaborate	Objective 1
21.	Ensure sufficient human resources and funds are available within the Shire to adequately implement the Strategy.	All	
22.	Investigate LNAs identified as 'unclassified' to determine if reprioritisation is required.	All	







## **SHIRE OF HARVEY**

102 Uduc Road, Harvey WA 6220

PO Box 500 Harvey, WA 6220

**T:** 9729 0300    **F:** 9729 2053

**E:** [shire@harvey.wa.gov.au](mailto:shire@harvey.wa.gov.au)

**[harvey.wa.gov.au](http://harvey.wa.gov.au)**