



## R - Codes Tree Planting Area – Approved Native Tree Species

### 1. Background

The landscaping provisions of the Residential Design Codes (R-Codes) requires the following for single houses, grouped dwellings and multiple dwellings (clause 5.3.2):

- “i. the minimum number of trees and associated planting areas in the table below; and*
- ii. landscaping of the street setback area, with not more than 50 per cent of this area to consist of impervious surfaces.*

| <b>Dwelling Type</b>   |                                       | <b>Minimum tree requirement</b> | <b>Minimum tree planting area</b> |
|--|---------------------------------------|---------------------------------|-----------------------------------|
| <i>Single houses and grouped dwellings (tree per dwelling)</i> |                                       | <i>1 tree</i>                   | <i>2m x 2m</i>                    |
| <i>Multiple dwellings (trees per site)</i>                     | <i>Less than 700m<sup>2</sup></i>     | <i>2 trees</i>                  |                                   |
|  | <i>700 – 1000m<sup>2</sup></i>        | <i>3 trees</i>                  |                                   |
|  | <i>Greater than 1000m<sup>2</sup></i> | <i>4 trees</i>                  |                                   |

*Note:*

- i. The minimum tree planting area is to be provided for each tree and shown on the site plan that is submitted with the application.*
- ii. The tree planting area is to be free of impervious surfaces and roof cover.”*

### 2. Tree species

The following tables provide the most suitable tree species relevant to the pre-European vegetation complex. Location of vegetation complexes are provided at Appendix 1.

#### Bassendean Complex – Central and South

| <b>Botanical Name</b>    | <b>Common Name</b>                       |
|--------------------------|--|
| <i>Acacia saligna</i>    | WA golden wattle or golden wreath wattle |
| <i>Agonis flexuosa</i>   | WA peppermint                            |
| <i>Banksia attenuata</i> | candlestick or slender banksia           |
| <i>Banksia grandis</i>   | bull banksia                             |

| Botanical Name                | Common Name                       |
|-------------------------------|-----------------------------------|
| <i>Banksia ilicifolia</i>     | holly-leaved banksia              |
| <i>Banksia menziesii</i>      | firewood banksia                  |
| <i>Eucalyptus tottiana</i>    | coastal blackbutt or prickly bark |
| <i>Melaleuca preissiana</i>   | stout paperbark                   |
| <i>Melaleuca raphiophylla</i> | swamp paperbark                   |
| <i>Xylomelum occidentale</i>  | western woody pear                |

## Karrakatta Complex

| Botanical Name               | Common Name                       |
|------------------------------|-----------------------------------|
| <i>Agonis flexuosa</i>       | WA peppermint                     |
| <i>Banksia attenuata</i>     | candlestick or slender banksia    |
| <i>Banksia dallanneyi</i>    | couch honeypot                    |
| <i>Banksia grandis</i>       | bull banksia                      |
| <i>Banksia ilicifolia</i>    | holly-leaved banksia              |
| <i>Banksia menziesii</i>     | firewood banksia                  |
| <i>Banksia prionotes</i>     | acorn banksia or orange banksia   |
| <i>Eucalyptus decipiens</i>  | redheart                          |
| <i>Eucalyptus tottiana</i>   | coastal blackbutt or prickly bark |
| <i>Melaleuca preissiana</i>  | stout paperbark                   |
| <i>Xylomelum occidentale</i> | western woody pear                |

## Southern River Complex

| Botanical Name            | Common Name                              |
|---------------------------|--|
| <i>Acacia pulchella</i>   | prickly moses                            |
| <i>Acacia saligna</i>     | WA golden wattle or golden wreath wattle |
| <i>Acacia urophylla</i>   | veined wattle or net-leaved wattle       |
| <i>Agonis flexuosa</i>    | WA peppermint                            |
| <i>Banksia attenuata</i>  | candlestick or slender banksia           |
| <i>Banksia grandis</i>    | bull banksia                             |
| <i>Banksia ilicifolia</i> | holly-leaved banksia                     |
| <i>Kunzea glabrescens</i> | spearwood                                |

## Swan Complex

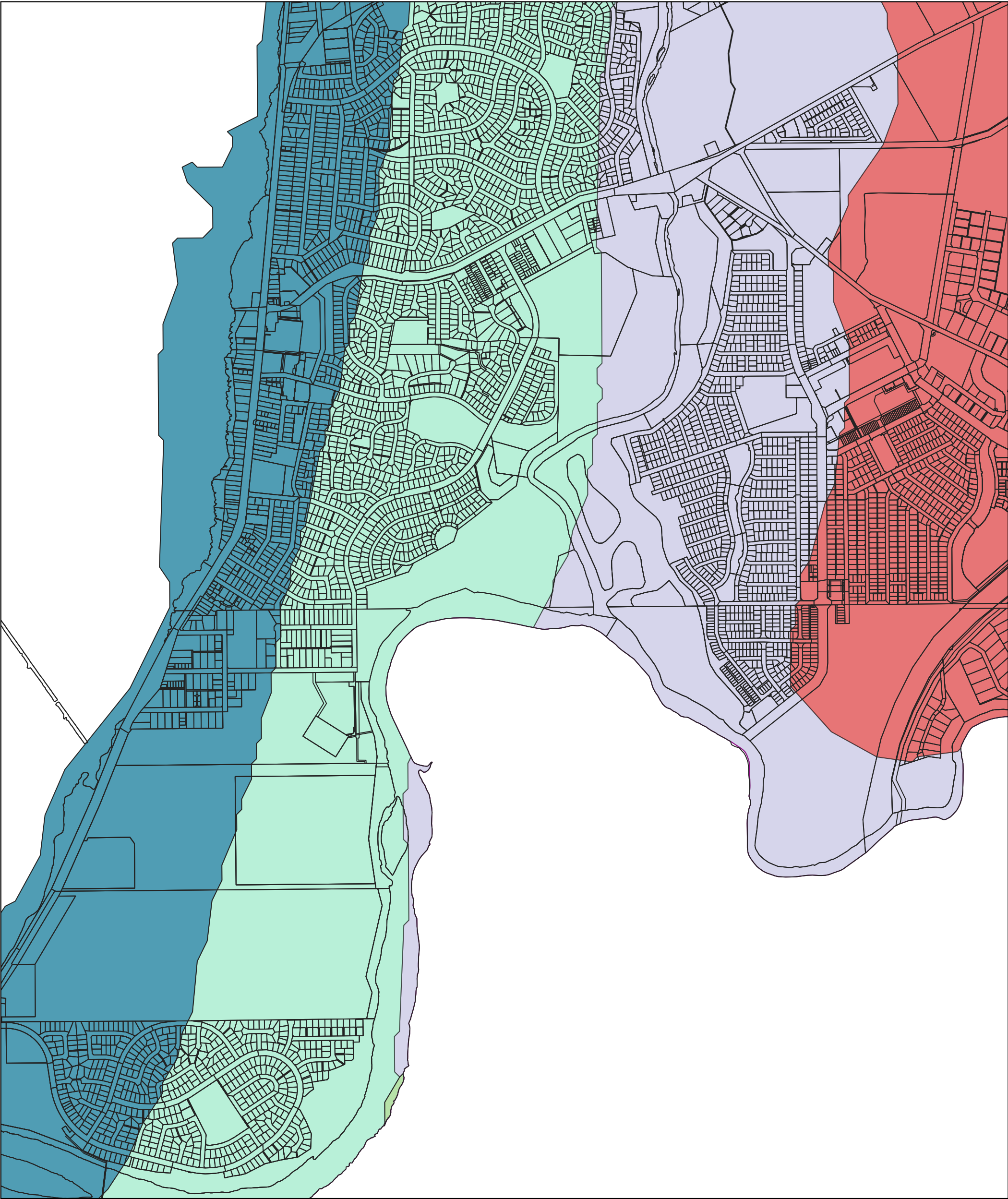
| Botanical Name                   | Common Name                              |
|----------------------------------|--|
| <i>Acacia pulchella</i>          | prickly moses                            |
| <i>Acacia salignia</i>           | WA golden wattle or golden wreath wattle |
| <i>Agonis flexuosa</i>           | WA peppermint                            |
| <i>Banksia littoralis</i>        | swamp banksia                            |
| <i>Casuarina obesa</i>           | swamp sheoak                             |
| <i>Hakea prostrata</i>           | harsh hakea                              |
| <i>Hakea varia</i>               | variable leaved hakea                    |
| <i>Hypocalymma angustifolium</i> | white myrtle                             |
| <i>Kunzea glabrescens</i>        | spearwood                                |
| <i>Melaleuca cuticularis</i>     | saltwater paperbark                      |
| <i>Melaleuca preissiana</i>      | stout paperbark                          |
| <i>Melaleuca raphiophylla</i>    | swamp paperbark                          |
| <i>Melaleuca viminea</i>         | mohan                                    |
| <i>Myoporum caprarioides</i>     | slender myoporum                         |
| <i>Paraserianthes lophantha</i>  | Cape Leeuwin wattle or albizzia          |
| <i>Pericalymma ellipticum</i>    | swamp teatree                            |
| <i>Taxandria linearifolia</i>    | swamp peppermint or coarse teatree       |

## Yoongarillup Complex

| Botanical Name                | Common Name                         |
|-------------------------------|-------------------------------------|
| <i>Agonis flexuosa</i>        | peppermint                          |
| <i>Banksia attenuata</i>      | candlestick or slender banksia      |
| <i>Banksia grandis</i>        | bull banksia                        |
| <i>Taxandria linearifolia</i> | swamp peppermint or coarse tea tree |
| <i>Taxandria parviceps</i>    | tea tree                            |
| <i>Xylomelum occidentale</i>  | western woody pear                  |

APPENDIX 1

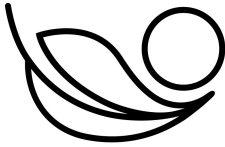
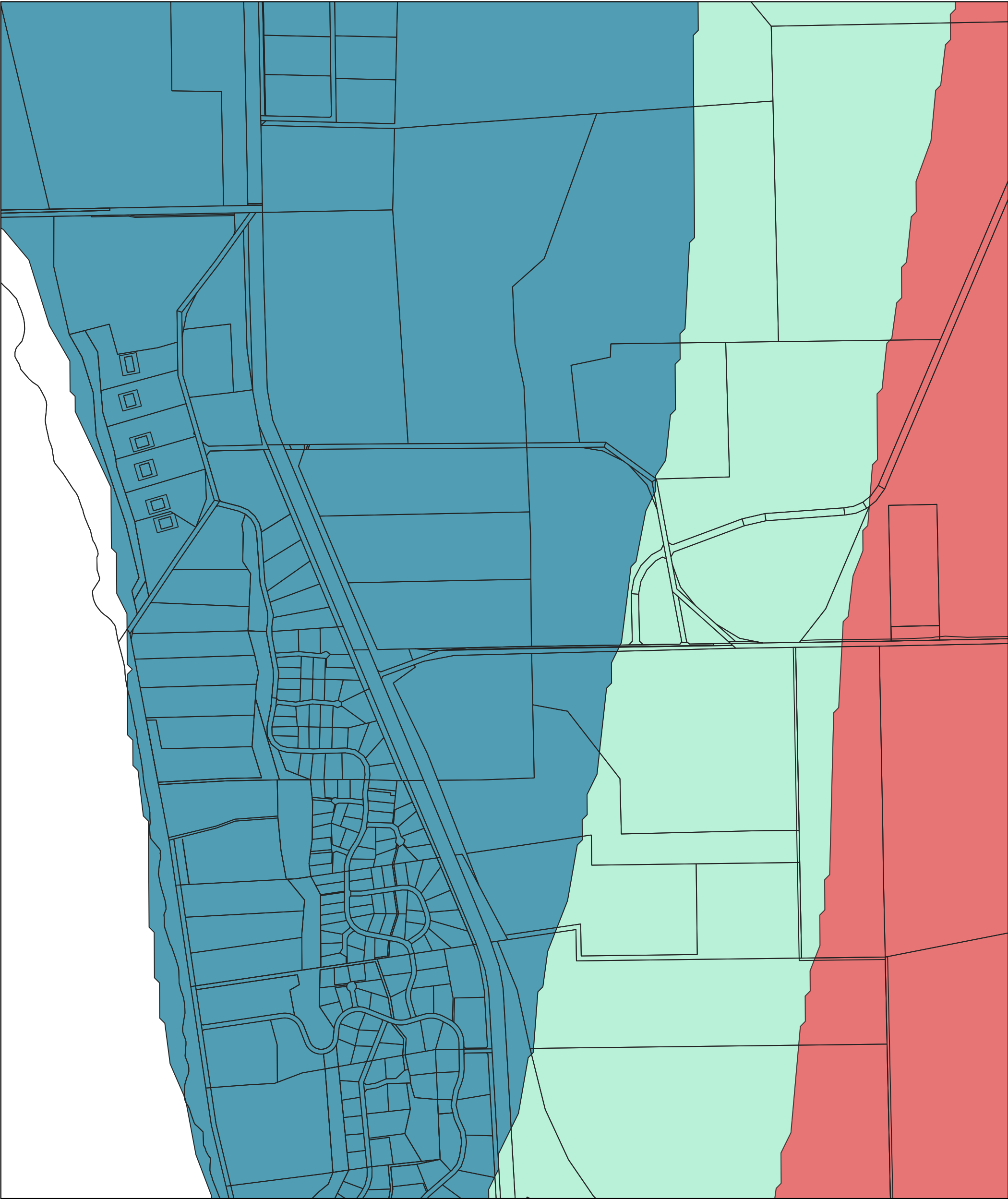
Vegetation Complexes - Australind



- Native Vegetation Complexes**
- |                                      |                        |
|--------------------------------------|------------------------|
| Bassendean Complex-Central and South | Southern River Complex |
| Karrakatta Complex-Central and South | Swan Complex           |
|                                      | Yoongarillup Complex   |



# Vegetation Complexes - Leschenault / Parkfield



SHIRE OF  
**HARVEY**

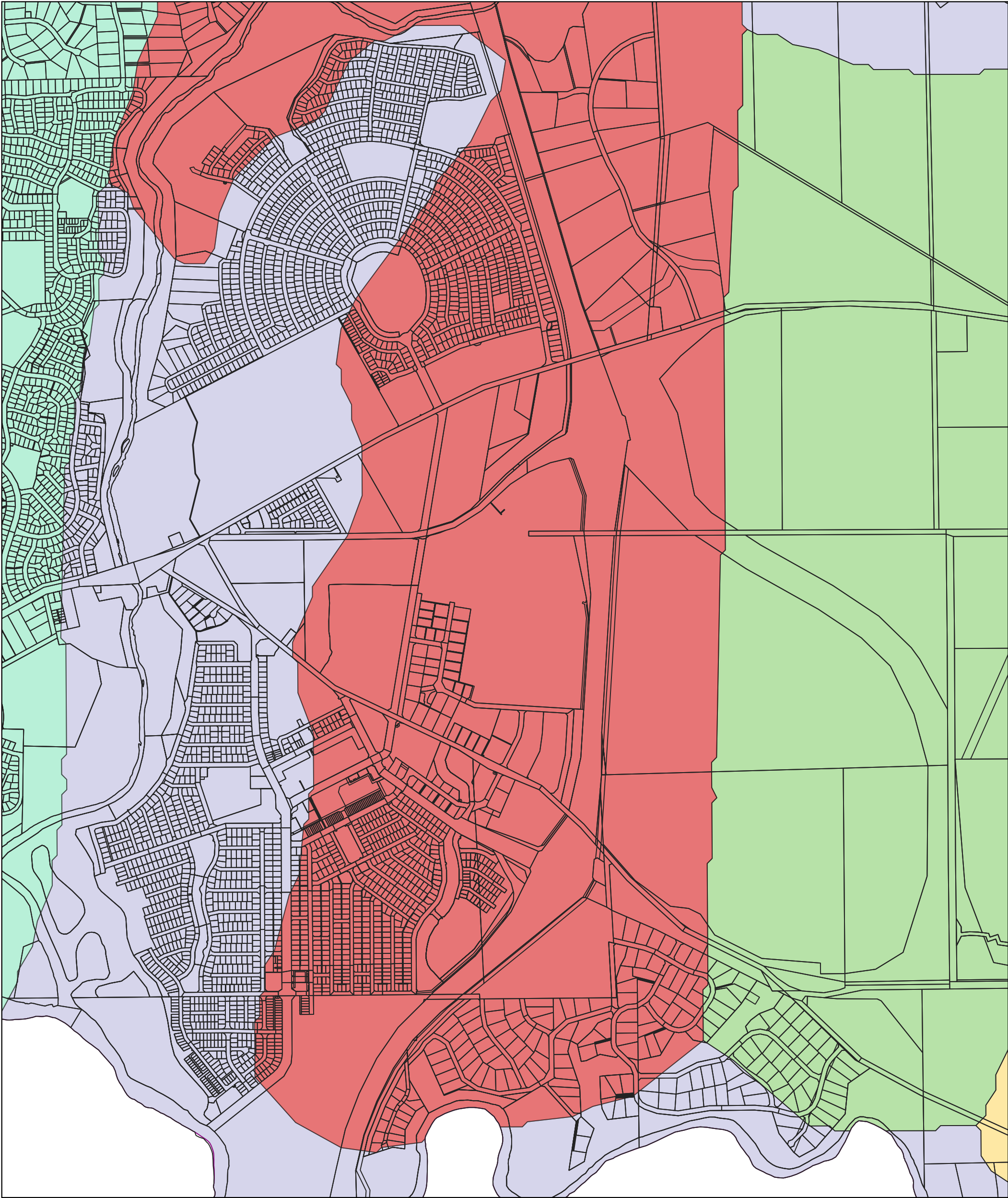
**Native Vegetation Complexes**

■ Bassendean Complex-Central and South

■ Karrakatta Complex-Central and South

■ Yoongarillup Complex

# Vegetation Complexes - Australind / Roelands



## Native Vegetation Complexes

- Bassendean Complex-Central and South
- Guildford Complex

- Karrakatta Complex-Central and South
- Southern River Complex
- Swan Complex