



Shire of Harvey

Community Safety and Crime Prevention Plan 2017-2019



The Shire of Harvey
PO Box 500
HARVEY WA 6220
Ph: 08 9729 0300
Fax: 08 9729 2053
Email: shire@harvey.wa.gov.au
www.harvey.wa.gov.au



Prepared by: Shire of Harvey

Document Management

Version: 1
Status: Final
Date: 16 May 2017

Contents

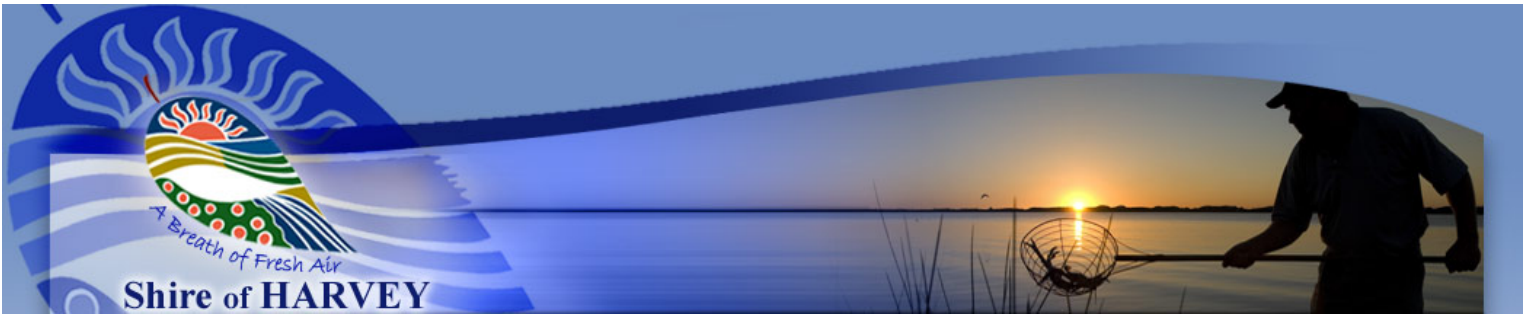
Message from the Shire President	1
A Guide to This Plan	2
Background	3
How we developed our Community Safety and Crime Prevention Plan	4
Crime Audit and Evaluation.....	5
What the Community told us.....	7
Objective 1: Identify and Prioritise Priority Offences	9
Objective 2: Promote Safer Communities	10
Objective 3: Support Families, Children and Youth	11
Objective 4: Address Alcohol and Other Drugs.....	12
Objective 5: Promote safe physical environments	13
Objective 6: Promote Road Safety	14
Measuring Our Success	15
Acronyms	16
References and Acknowledgements	17



Our Vision

Together, towards a better lifestyle.





Message from the Shire President



It is a pleasure to present the Shire of Harvey’s Community Safety and Crime Prevention Plan (CSCPP) 2017-2019.

This Plan has been developed following collaborations with key stakeholders and community consultation. The Actions contained within the Plan aim to not only identify and target problem areas but also highlight how we can create stronger communities through support, provision of information and the development of safe environments.

The Shire of Harvey is an area well known for its relaxed family lifestyles, natural beauty and strong communities. It is these strengths that will encourage us to continue to work together to provide future generations with the same feeling of safety and belonging.

Safe, welcoming environments are something that we all want for our families and communities. Whether it is coaching a sports team or volunteering at an event, we can all do our bit to create social connectedness for ourselves and others around us.

On behalf of the Shire of Harvey, I look forward to seeing the results of this Community Safety and Crime Prevention Plan as it is implemented over the coming three years.

Cr Tania Jackson
Shire President



A guide to this Plan

The Shire of Harvey Community Safety and Crime Prevention Plan is a strategic guide to address crime.

Outcomes and Actions have been developed for each of six identified key Priority areas:

1. Identify and Target Priority Offences
2. Promote Safer Communities
3. Support Families, Children and Young People
4. Address Alcohol and other Drugs
5. Promote Safe Physical Environments
6. Promote Road Safety

For each strategic objective the following is provided:

- How the Shire will achieve the strategic objective through its desired outcomes;
- Actions to achieve each desired outcome; and
- Key partners identified to assist with each action.



The plan also provides details of how the Shire will measure success in achieving the objectives, and who else has influence over the Shire's ability to achieve these objectives.



How we will use this Plan

The aim of the Community Safety and Crime Prevention Plan (CSCPP) is to guide crime prevention initiatives for Local Government, local community groups and key government agencies in collaboration with the Shire of Harvey community to improve community safety. It is designed to be a flexible and versatile document to guide planning and to cater for the changing needs of the community over the next three years.

As a result of the community consultation, the Plan will also be a useful tool that can be used by various stakeholders to develop future project opportunities and seek funding.

Background

The Plan identifies community safety and crime prevention priorities for the Shire of Harvey. It also documents the outcomes and actions that will be implemented and evaluated.

The Community Safety and Crime Prevention Committee

A local Community Safety and Crime Prevention Committee was formed to help develop the original Community Safety and Crime Prevention Plan and oversee its implementation.

The Committee reviewed the outcomes of the community consultation and prioritised the issues that had been identified.

The local Committee has a shared responsibility (lead by the Shire of Harvey) to oversee the implementation of the Plan and an ongoing role in the evaluation of key activities.

After adoption, a desktop review of the Harvey Strategic Community Plan will be undertaken in 2019, with a full review and renewal in 2021. The community will be notified and given an opportunity to participate in the review and renewal process.

The Committee is made up the following members:

- Two (2) Shire Councillors;
- One (1) representative from Harvey Police;
- One (1) representative from Australind Police;
- One (1) representative from Yarloop Police;
- Three (3) general community members;



- Manager Community and Economic Development;
- Executive Manager of Technical Services (or his delegate); and
- Regional Roadwise Officer.

Developing capable partnerships at the local level is vital in ensuring the sustainability of community policing and community priority projects being addressed with each of the towns in the Shire of Harvey.

How we developed our Community Safety and Crime Prevention Plan

The development of the Community Safety and Crime Prevention Plan 2017-2019 involved:

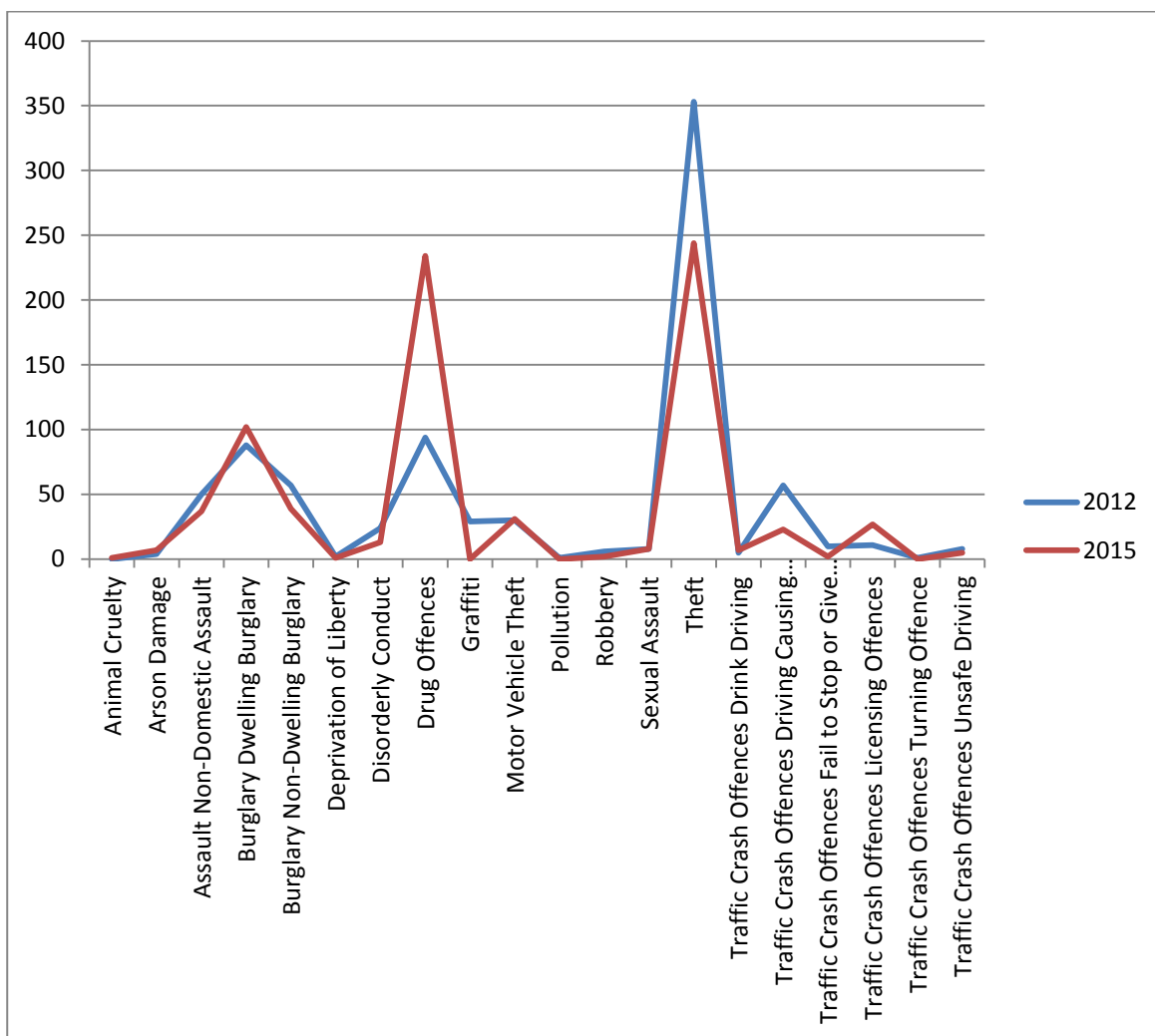
- Research into crime statistics for the period 2011-2015
- Public consultation:
 - Shire of Harvey Community Perceptions Survey 2017
 - Shire of Harvey Community Survey 2017
 - Shire of Harvey Community Meetings 2017
- Consultation with key stakeholders including:
 - Western Australian Police
 - Department of Education
 - Shire of Harvey staff
 - Non-government agencies including representatives of the local Indigenous community.



Comparing crime statistics for the Shire of Harvey from the period of the 2012-2015 (See Fig 1), crime in general has dropped except for:

- Burglary (Dwelling)
- Drug Offences
- Traffic crash offences, licensing offences

Fig. 1 Comparison of Crime Statistics from 2012 to 2015 (Western Australia Police Crime Statistics)



- The incidence of graffiti dropped from 29 incidences to 7
- Assault Non-Domestic Assault dropped from 50 incidences to 37
- Burglary Dwelling Burglary rose from 88 incidences to 102
- Burglary Non-Dwelling Burglary dropped from 57 incidences to 39
- Disorderly Conduct dropped from 24 incidences to 13



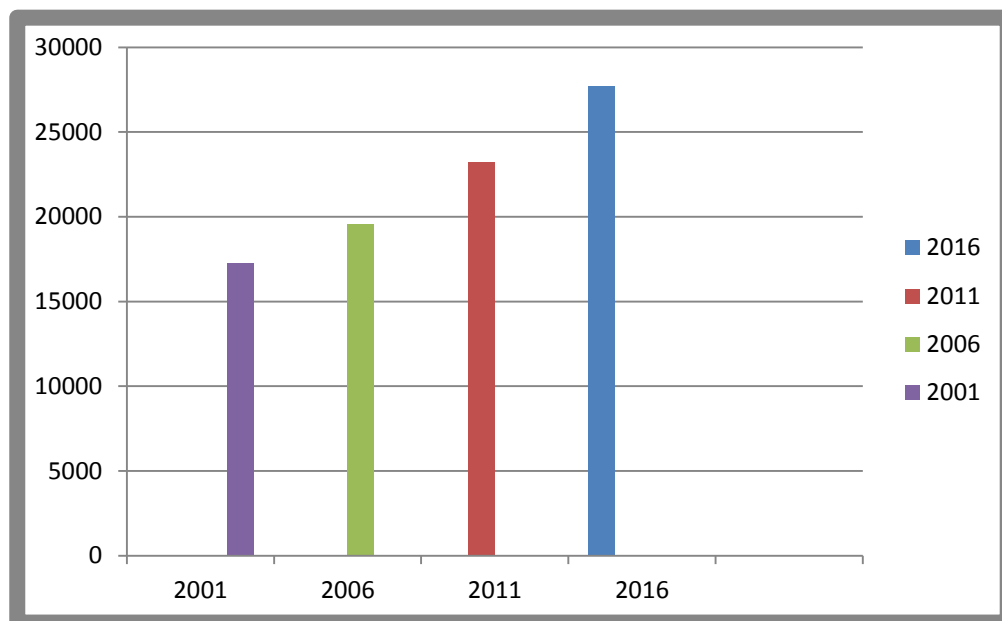
- Drug Offences rose from 94 incidences to 234, however this reflects the Police targeting Drugs and having higher seizure results
- Theft dropped from 353 incidences to 244
- Robbery dropped from 6 incidences to 2
- Traffic Crash Offences Driving Causing Bodily Harm dropped from 57 incidences to 23
- Traffic Crash Offences Fail to Stop or Give Way dropped from 10 incidences to 2
- Traffic Crash Offences Licensing Offences rose from 11 incidences to 27

General Findings

Based on the available data, crime in the Shire of Harvey reduced during the period of the 2012-15 Plan.

This positive trend indicates that the diligent approach of our police in the targeting of priority offences combined with crime prevention strategies over the course of the previous plans, have contributed to reducing crime and improving community safety in the Shire of Harvey. These figures are particularly encouraging considering the rapid population growth in the Shire. (See Figure 2)

Fig 2 Australian Bureau of Statistics Estimated Resident Population 2015





Community Consultation

The Shire of Harvey received community feedback via the recent Community Safety and Crime Prevention Plan survey, the Shire of Harvey Community Meetings and the Shire of Harvey Community Survey.

The community generally based their responses on what they had seen or read in the media, with a few members learning about issues through chatting. Few responders knew of someone who had been a recent victim of crime in their area. The majority of responders felt very safe or moderately safe, and that the crime rate was moderate to very low living in their area. Half believed that during the time they had lived in the Shire of Harvey safety and crime had remained the same, while the balance were equally divided believing that crime had become more or less of a problem.

The survey results whilst not being representative of the wider community due to the low number of respondents provide useful anecdotal information on community views and matters of concern.

Summary of Comments

A summary of the key issues raised by the community in relation to community safety and Crime prevention were:

To Promote Safer Communities

- That Police address big problems well but there is a need for more Police presence
- Full time Police Station to meet growing community
- Better use of CCTV

To Support Families, Children and Young People

- Support and education for Responsible Parenting and life skills for adolescents
- Youth space for Harvey Youth
- Address Domestic violence and anti-social behaviour
- More community events and range of activities for children and families
- Focus on control of youth crime and education

Comments from the Community

"Police address big problems well"

"Offer easily accessible programs targeting families including healthy living forums"

"Encourage adolescents to undertake parenting, first aid and financial planning sessions"

"Provide staff and a safe place for 10-17 year olds to hang out"

"Give the kids a sense of ownership/responsibility using older kids as mentors."

"Continue to focus on addressing alcohol and drug issues as they lead to other crimes and incidents"

"Fix street lighting"

"Target speeding and drivers under the influence of alcohol and other drugs"



To Address Alcohol and other drugs

- Continued police community liaison to combat drug activity
- A higher focus on addressing alcohol and drug issues as they lead to other crimes and incidents.
- Liaise with other agencies and departments re: drugs and alcohol

Promote Safe Physical Environments

- More street lighting and fix existing street lighting
- More footpaths in streets and fix existing footpaths
- More cycle paths
- Maintain roads and fix kerbing

Promote Road Safety

- Target speeding
- More drug and alcohol testing of drivers
- More residential speed signs
- Gates at rail crossings
- Provide pavements in residential areas

**Objective 1. Identify and Target Priority Offences
(Burglary, stealing, domestic violence, non-domestic
violence, anti-social behaviours).**

How will we get there?

The following strategies have been identified as contributing to the achievement of each outcome.

Outcome 1.1	Reduction in local crime incidents	Key Partners
1.1.1	Monitor statistics and trends to identify areas of concern	WAP SOH
1.1.2	Respond to trends with local actions and initiatives	WAP SOH

How will we get there?

The following strategies have been identified as contributing to the achievement of each outcome.

Outcome 2.1 Increased community awareness		Key Partners
2.1.1	Distribute E Newsletter to provide updates on current activity	HRCC, BCRC, HACC, WAP SOH
2.1.2	Support community education on rural security	BCRC, WAP SOH
2.1.3	Support community education on business security	HCRC, BCRC, WAP
2.1.4	Participate in local & regional campaigns where appropriate	HCRC, BCRC, WAP
Outcome 2.2 Increased reporting of suspicious activities		Key Partners
2.2.1	Provide information on community awareness and surveillance	BCRC, WAP
2.2.2	Promote reporting of suspicious activities through E Newsletter, local newspaper and local radio	WAP SOH

Objective 3. Support families, children and young people

How will we get there?

The following strategies have been identified as contributing to the achievement of each outcome.

Outcome 3.1	Reduction in youth crime	Key Partners
3.1.1	Continue to support organisations and clubs that provide activities and services for young people that address and promote positive values in the community, including the 'Choose Respect' code of behaviour.	Schools, WAPCYC, HRCC, CR, Libraries, LLC
Outcome 3.2	Increased accessibility and affordability of activities and events for families, children and youth that promote safe choices	Key Partners
3.2.1	Support children and youth activities and events	HRCC, LLC, Libraries, SOH
3.2.2	Continue to provide facilities and services for families, children and young people.	SOH
3.2.3	Continue to promote and administer the Leeuwin Sail Training and Department of Sport Kidsport Programs	DSR, Sporting Clubs, SOH
Outcome 3.3	Continual Improvement of Australian Early Development Census results	Key Partners
3.4.1	Work collaboratively with and support key early years groups to deliver evidence based social development programs.	DCP, WACHS, HEYN, SOH
3.4.2	Facilitate opportunities for key Early Years group representatives, local agencies and Shire Staff to share information, ideas and plans.	HEYN
3.4.3	Remain informed of Early Years activities and actively promotes internally and externally.	HEYN
3.4.4	Key Early Years groups, programs and events are effectively promoted with the assistance of Shire resources.	HEYN

How will we get there?

The following strategies have been identified as contributing to the achievement of each outcome.

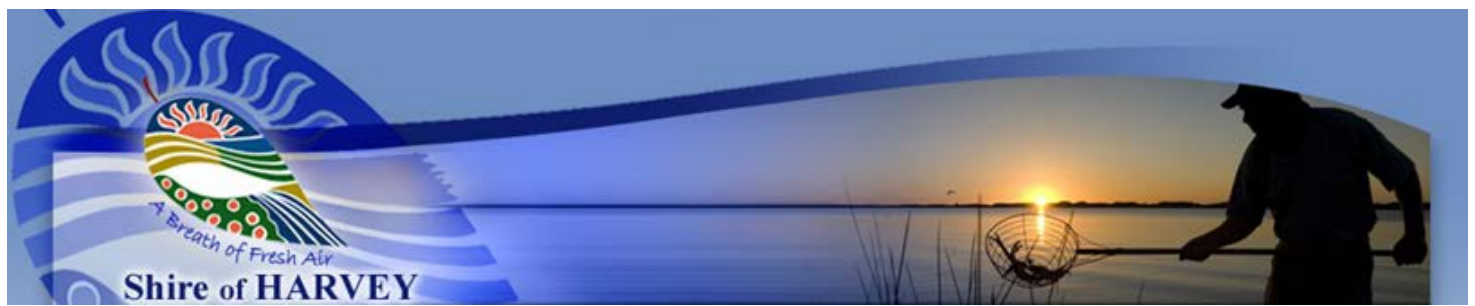
Outcome 4.1	Reduction in the incidence of crime and harm related to alcohol and other drugs	Key Partners
4.1.1	Support and participate in local and regional campaigns where appropriate	WACHS, WAP, HCN, SOH
4.1.2	Form partnerships to address drug and alcohol related crime and harm	WACHS, WAP, HCN, SOH

How will we get there?

The following strategies have been identified as contributing to the achievement of each outcome.

Outcome 5.1 Decrease in Graffiti and Vandalism		Key Partners
5.1.1	Identify streetscape and lighting standards needed to improve community safety and crime prevention	Community SOH
5.1.2	Continue to use portable security cameras in hotspot locations to identify offenders	Community, SOH, WAP
5.1.3	Investigate the need for CCTV in priority locations	SOH, WAP

Outcome 5.2 Increase in adoption of CPTED principles.		Key Partners
5.2.1	Review existing public facilities and identify priorities for improving safety	SOH
5.2.2	Facilitate initiatives that promote CPTED principles to local residents	WAP, SWCC
5.2.3	Facilitate initiatives that promote CPTED principles to business owners.	Businesses, WAP,
5.2.4	Consider CPTED during the planning stages of all new developments	SOH



Measuring Our Success

The overall aim of this Plan is to align the community's visions and aspirations for the future to the Shire's objectives. These objectives will be measured by both quantifiable and non-quantifiable outcomes. The Shire will use the following key indicators to demonstrate how we are progressing towards achieving our objectives and outcomes.

	Objectives		Outcomes	Key Indicators
	<i>Identifying and Targeting Priority Offences</i>	1.1	Reduction in local crime incidents	Positive statistics and data reports
				Increase in successful initiatives
	<i>Promoting Safer Communities</i>	2.1	Increased community awareness	Increase in community actions to promote safer communities
		2.2	Increased reporting of suspicious activities	Increase community reporting
	<i>Supporting Families, Children & Youth</i>	3.1	Reduction in youth crime	Statistics and data reports
		3.2	Increased accessibility and affordability of activities and events for families, children and youth that promote safe choices	More children being positively engaged, understanding about safe choices and showing respect
		3.3	Continual Improvement of Australian Early Development Census results	Statistics and data reports
	<i>Address Alcohol & Other Drugs</i>	4.1	Reduction in the incidence of crime related to alcohol and other drugs	Statistics and data reports
	<i>Promote Safe Physical Environments</i>	5.1	Decrease in Graffiti and Vandalism	Statistics and data reports
		5.2	Increase in adoption of CPTED principles.	Number of CPTED concepts implemented
	<i>Promote Road Safety</i>	6.1	Reduction in traffic offences	Statistics and data reports
		6.2	Implement Road Safe urban traffic design	Road Safe urban traffic design implemented



ACRONYMS

The following acronyms have been used within this document.

	Name	Web Contact
AEDC	Australian Early Development Census	www.aedc.gov.au
CCTV	Closed-circuit television	
CPTED	Crime Prevention Through Environmental Design	
CSCP	Community Safety and Crime Prevention	
CR	Choose Respect	www.chooserespect.org.au
DCP	Department for Child Protection	www.dcp.wa.gov.au
DSR	Department of Sport and Recreation	www.dsr.wa.gov.au
HACC	Harvey Australind Home & Community Care	www.swcommunitycare.org.au
HCN	Harvey Community Network	
HEYN	Harvey Early Years Network	
HH	Harvey Hospital	www.health.wa.gov.au
HRCC	Harvey Recreation and Cultural Centre	
HSC	Harvey Senior Citizens Centre	
HSHS	Harvey Senior High School	www.det.wa.edu.au
ICCWA	Injury Control Council of Western Australia	www.iccwa.org.au
LDAG	Local Drug Action Group	localdrugaction.com.au
LLC	Leschenault Leisure Centre	www.llc.com.au
NHW	Neighbourhood Watch	www.nhw.wa.gov.au/Reporting
OCP	Office of Crime Prevention	www.crimeprevention.wa.gov.au
RW	Roadwise WA	www.roadwise.asn.au
SOH	Shire of Harvey	www.harvey.wa.gov.au
SWCC	South West Community Care	www.swcommunitycare.org.au
WACHS	WA Country Health Services-South West	www.wacountry.health.wa.gov.au
WAP	WA Police Department	www.police.wa.gov.au
WAPCYC	Western Australian Police and Community Youth Centres	www.wapcyc.com.au
WALGA	Western Australian Local Government Association	http://walga.asn.au



References and Acknowledgements



The Shire of Harvey Community Safety and Crime Prevention Plan 2017-2019 has been developed by engaging the community and other stakeholders.

We thank the people of the Shire of Harvey for their time and effort in being a part of our community engagement and for their invaluable input into our Community Safety and Crime Prevention Plan.

Facilitators for the process were the Community Safety and Crime Prevention Committee.

We have also made reference to the following documents and websites during the preparation of the plan.

- Shire of Harvey Community Engagement Report of Findings January 2017
- Shire of Harvey website www.harvey.wa.gov.au
- Australian Bureau of Statistics www.abs.gov.au
- WA Police Crime Statistics www.police.wa.gov.au
- Shire of Harvey Community Profile (profile.id)
- Shire of Harvey Strategic Plan 2013 to 2023

